

# HVA Citizens Eyes on the Lake

July 14th, 2018

Lindsay Mc Millan  
Dorothy Gronwall

[Watershedtaskforce@gmail.com](mailto:Watershedtaskforce@gmail.com)


# Honeoye Lake

## Blue-Green Algae Monitoring



- Started July 2013 at the request of NYSDEC
- Weekly June–mid October
  - 10 BGA Monitoring Sites
  - Send 3-6 BGA Samples to SUNY ESF for Testing every Monday
  - Visual Surveillance with Digital Pictures every Monday & Friday
- BGA visual observations and SUNY ESF test results posted on DEC BGA web site late every Friday afternoon
- 2017 72 samples collected for testing over a 20 week time period

# HAB Monitoring Locations



**NEW YORK**  
STATE OF  
OPPORTUNITY

**Department of  
Environmental  
Conservation**

Name: \_\_\_\_\_ Date: \_\_\_\_\_ Time: \_\_\_\_\_

Percent of Shoreline Surveyed (circle one): <25% 25-50% 50-75% >75%

Description of Bloom: \_\_\_\_\_

Extent of Bloom (check one) ☐ No Bloom Present ☐ Small Localized (few properties)  
☐ Large Localized (many properties) ☐ Widespread/lakewide

Additional Comments: \_\_\_\_\_

**Sample ID#s**

#1: \_\_\_\_\_

#2: \_\_\_\_\_

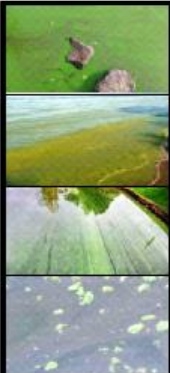
#3: \_\_\_\_\_

#4: \_\_\_\_\_

#5: \_\_\_\_\_


- If a bloom is present, collect sample at densest location.
- Show location and size of bloom on map. Mark an X where samples were collected.
- Fill out sample information above, then send samples & form to ESF.

**HABs**




**Collect a Sample**

**Not HABs**



**Do Not Collect a Sample**



**Honeoye Lake  
Harmful Algal Bloom Shoreline Survey Form**



# Honeoye Lake HABs Citizen Eyes on the Lake



- Need volunteers to monitor for HABs in near shore areas
- HABs identification training session will be provided
- Volunteers to send e-mail with HAB pictures on weekends to:  
[watershedtaskforce@gmail.com](mailto:watershedtaskforce@gmail.com)
- If a HAB is reported we will check that location Monday morning.



# Volunteer Today!



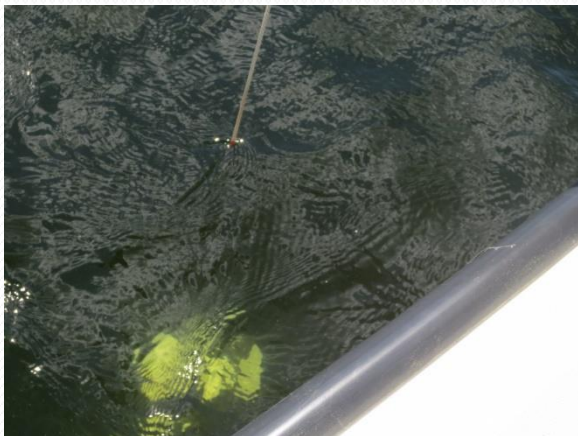
- This initiative has the potential to expand our HABs surveillance to the complete 10 miles of lake shoreline.
- Sign up today!
- Questions

# Citizen Secchi Disk Program

*Looking for way to get involved with water quality monitoring?*

Sign up to be a Secchi disk volunteer!

# Citizen Secchi Disk Program



- Training & equipment will be provided
- Take weekly water clarity and water temperature readings
- At a time that is convenient
- This water quality data will complement the HLWTF water quality data
- Collection of nearshore water quality data will help us assess weekly lake water clarity and temperature changes



# How and What ....

## Equipment & Materials

- Secchi disk with surveyors tape
- Thermometer to record water temperature
- Data sheets
- Educational materials

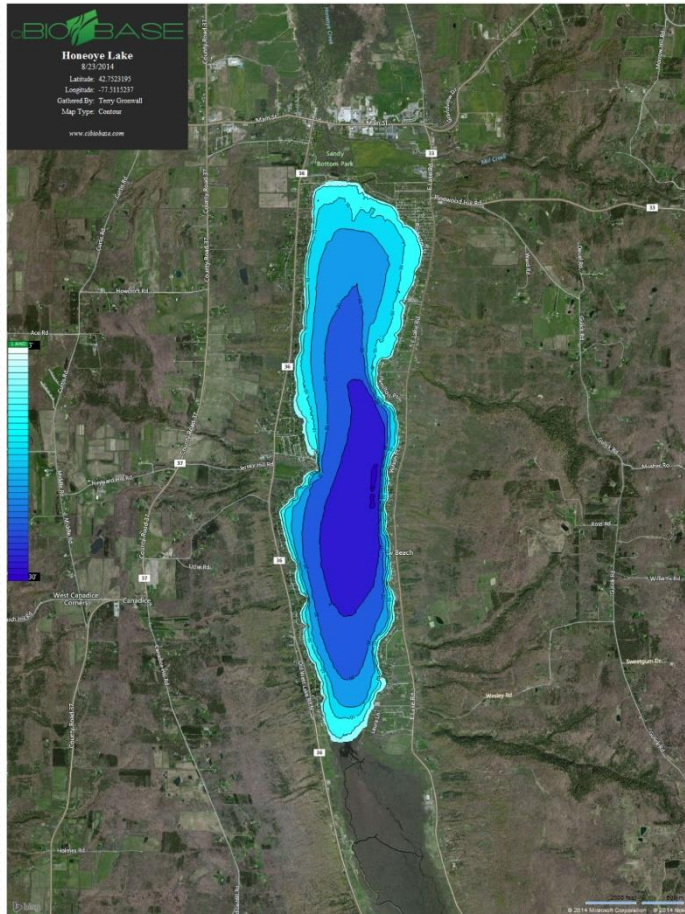
## Data Collected

- Water Clarity Reading
- Water Temperature
- Water Depth
- Location of reading
- Time of day
- Wind Direction
- % Cloud Cover
- Blue-Green Algae Observations

**Data is reported to our volunteer program coordinator who will compile the readings and send the data to HVA Web Master, HVA Facebook prime, and the HLWTF**



# Need 3-4 Secchi Volunteers for the Northern Lake Basin



- Sign up today!
- Or you can send an email to Terry Gronwall at [watershedtaskforce@gmail.com](mailto:watershedtaskforce@gmail.com)
- We will contact you to schedule your training
- Provide you the necessary equipment
- We already have 4 volunteers for the Southern Lake Basin