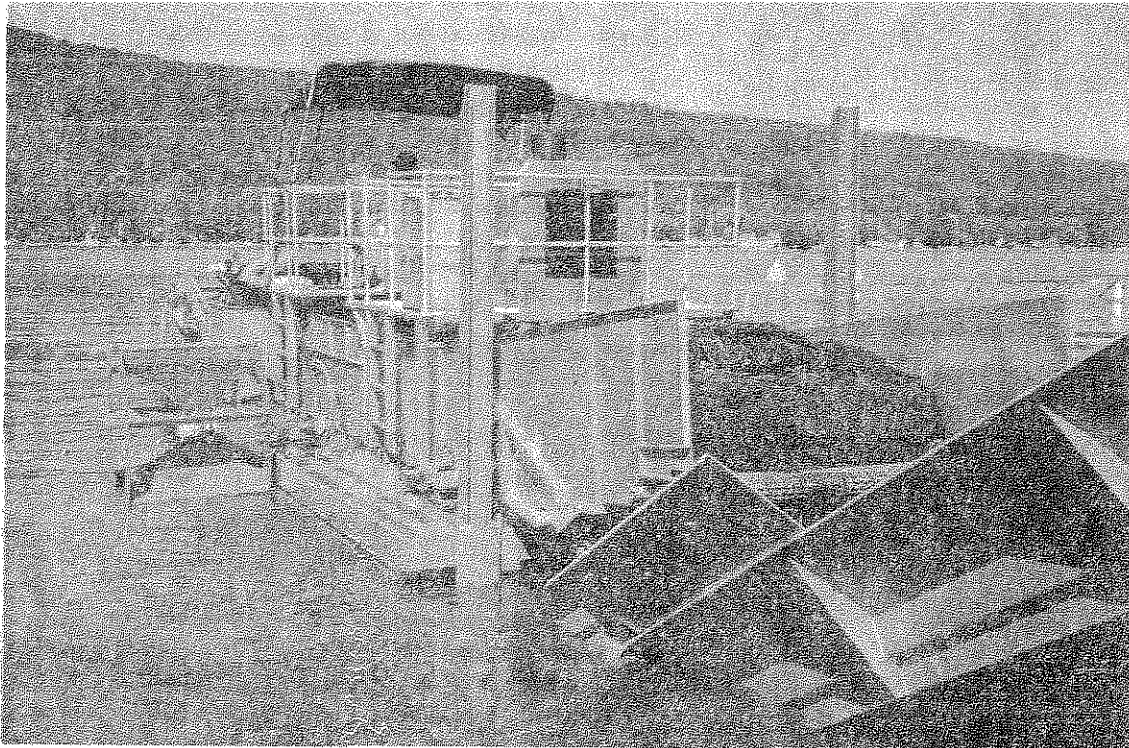


# *The Grapevine*

Newsletter of the HONEOYE VALLEY ASSOCIATION

VOL. 27 No 3

Fall 2012



## 2012 Weed Harvesting Overview Report

The harvester operated from July 2 through September 13, 2012, one day shy of 11 weeks. On June 18, Alpha Boats delivered a highly anticipated new harvester and conveyor to the NYS Boat Launch on East Lake Road. Returning seasonal operators Randy DePew and John Miller were trained on the larger equipment by Alpha Boats staff. The new harvester was purchased through a cooperative arrangement with the Towns of Canadice and Richmond whereby the towns are reimbursing the County for a portion of the purchase price on a pro-rated basis over a seven year schedule.

The new harvester has a wider cutting area (11 feet) and deeper cutting depth of 6'9" compared to the old machines. The boat can carry very large wet loads (over 10,000 lbs.), minimizing travel time to off-loading sites. Actual load size was dictated by the capacity of the dump truck used to transport vegetation to composting sites. We were fortunate to have available a large dump truck with an estimated capacity of five wet tons/dump truck load.

The new equipment helped improve harvesting efficiency. A total estimated 725 wet tons of vegetation were removed from the lake in 2012. In 2012, the average rate of removal was 2.09 tons per hour, the most efficient harvesting rate in the past 10 years.

Con't p. 3

## About Your HVA...

The Honeoye Valley Association is a not-for-profit volunteer organization that works in a variety of ways to protect and preserve the environmental quality of the Honeoye Lake watershed.

To become a member (and receive this newsletter regularly), send \$20 to the HVA, PO Box 165, Honeoye, NY 14471.

To contribute articles, letters or opinions for this newsletter, send them to the above address.

Visit us on our website at [www.hvaweb.org](http://www.hvaweb.org).

The HVA Board of Directors meets at 7 p.m. on the second Wednesday of the month, March through November. We meet at the United Church of Christ on Main Street. All meetings are open.

### The HVA Board of Directors:

Hugh Turner	367-3522
Frank Powell	367-2927
Kay Luther	229-2315
Helen Johnson	229-2273
Terry Gronwall	367-3000
Jack Starke	367-2079
Don Bennett	229-2003
Dick Stoddard	229-2455
Don Cook	367-9293
Tom Young	367-8086
Ed Jackson	229-1090
Amrit Patel	671-1484

## HVA LABOR DAY FOOD DRIVE NETS 615 POUNDS OF GROCERIES



The Honeoye Valley Association conducted a Food Drive to benefit the Honeoye Food Pantry on Labor Day

afternoon which netted 615 pounds of food. The Honeoye Food Pantry provides food for families in need in and around the Honeoye area and is located at the Honeoye UCC.

Don Fox, Coordinator of the Food Pantry, was amazed as Honeoye area residents just kept coming with a diverse selection of food. The afternoon got off to a great start with the Honeoye Cheerleaders who had conducted a community service project and they brought bags and boxes of groceries. Don was elated about how much was donated in just one afternoon. He commented that he is so pleased with the generosity of the Honeoye Community and thanks everyone for their donations.

This was the first year of what the Honeoye Valley Association hopes will be an annual community event and the HVA would like to thank all who participated.

## HVA Grant Application

The Honeoye Valley Association has made a grant application to Ontario County for the printing and distribution of an informational packet on Honeoye Lake. This initiative is being sought to better inform the dwellers and guests who by their proximity to Honeoye Lake have an effect on lake use and water quality.

Some of the topics we hope to cover include:

- Ideas to protect water quality
- Information on invasive species
- Safe Boating Laws
- Personal Water Craft Laws
- Healthy Lake – Healthy Lawns

Assuming we get funding we will have packets printed and ready for distribution in the spring of 2013. These packets will be hand delivered to all lake properties and the properties adjacent the East Lake Road and County Road 36; with a reserve that can be given new home buyers for some time to come. We are hoping this program will welcome new people and remind long standing residence of the need to be mindful when working and living around the lake.

## Weed Report *Con't. from p. 1*

Homeowners with waterline markers in the lake should remove them as ice accumulation can cause damage to waterlines.

Thank you from the Ontario County AVMP team to Honeoye Lake residents, the Towns of Richmond and Canadice, Honeoye Central School District, NYS Parks, California Ranch residents and neighbors, HVA and HLWTF for your assistance during the season!

Betsy Landre  
Senior Planner  
Ontario County Planning Department  
20 Ontario Street  
Canandaigua, New York 14424  
Office: (585) 396-4458  
e-mail: [betsy.landre@co.ontario.ny.us](mailto:betsy.landre@co.ontario.ny.us)

## South Pole Expedition, 2011

Join Eivind Rynning on Wednesday, November 14 from 7:00-8:30 PM for a program on South Pole Expedition, 2011 at the FLCC Muller Field Station, 6455 County Road 36, Honeoye, NY 14471

Eivind spent last November and December on two expeditions skiing to the South Pole from Hercules Inlet. He arrived in time to celebrate 100 years since the first person set his foot on the South Pole.

Learn about Eivind's expedition and see what equipment he used. You will also learn about what happened 100 years ago when Roald Amundsen made it to the South Pole

To make a reservation, please contact Nancy Lawson at 585-785-1257 or [lawsonnk@flcc.edu](mailto:lawsonnk@flcc.edu)

This event is co-sponsored by Finger Lakes Community College and the Honeoye Valley Association. More information is available at [www.hvaweb.org](http://www.hvaweb.org)

## NYSFOLA 2012

On Saturday October 20th the New York State Federation of Lakes held its 18th annual meeting at the Moonwinks Restaurant on Cuba Lake.

The speakers included Dr. Bill Haman from Oneonta State College and two of the graduate students he is mentoring for a Masters in Watershed

Management, a unique program Bill fostered at Oneonta. This is the newest and only program of this nature in the U.S. Greg Sargis from the Nature Conservancy gave a presentation on a new invasive species grant program and Miranda Reid, manager of the Conesus Lake Watershed spoke on their Invasive Species response program.

Lunch was, as usual, a great time to meet and speak with some of the fifty or so participants from all over the state. After lunch Bob Johnson gave a firsthand account of the eradication program for Hydrilla on the inlet to Cayuga Lake and some of the difficulties in attempting to eradicate this looming problem. Don Zelanzny finished the speakers with a talk about the New York State Department of Environmental Conservation concerns about the Great Lakes Basin as well as the Finger lakes. Each of these presenters have a great deal of expertise in the area in which they spoke.

Anyone interested in attending next year's meeting which will again be held at beautiful Cuba Lake can contact Don Cook or Hugh Turner of the Honeoye Valley Association.

## What Causes Weed Growth?

The primary factors that influence the growth of aquatic weeds are water depth, bottom type, nutrient level, and water clarity. These factors vary from one body of water to the next and are often influenced by the surrounding watershed.

As lakes and ponds age they fill with sediment rich in nutrients such as nitrogen, phosphorus, and potassium. Waters become shallower and more fertile favoring weed growth.

Weather influences weed growth. Run-off from heavy rain carries nutrients into the water. Drought may lower water levels creating shallow areas suitable for heavy weed growth. Sunlight contributes to heavy weed growth particularly in shallow, clear waters.

Human activities contribute to weed growth. Clearing of land for development and farming cause soil erosion leading to increased sedimentation. Discharge from sewage treatment plants, livestock feedlots, and leaky septic tanks provide additional sources of nutrients. Hard surfaces such as roads promote runoff rather than absorption and natural filtration.

For these reasons waters that would not support weed growth under natural conditions may support heavy weed growth as a result of human activities.

Detach and mail with your check:

Date: \_\_\_\_\_

Individual (\$20)  New Member  Renewal    Extra donation for water quality projects  
\$ \_\_\_\_\_

Lake		Mailing	
Name :		E-Mail:	
Address:		Address:	
City:		City:	
State:	Zip:	State:	Zip:
Phone:		Phone:	

I would also like to be involved with the committees circled below:

- |                    |                  |                    |
|--------------------|------------------|--------------------|
| Aquatic Vegetation | Membership Drive | Board of Directors |
| Boat & Safety      | Publishing       | Fish & Wildlife    |
| Stream Monitoring  | Litter Control   |                    |

USA

Honeoye Valley Association  
PO Box 165  
Honeoye, NY 14471

